

Freshman Parent Night

Welcome Class of 2028!



Tonight's Agenda

- Counselor Roles / Alpha Breakdown
- NNHS Graduation Requirements
- Dual Credit, Pathways & Endorsements
- NNHS Support Systems
- Huskie Homeroom & WIN
- Infinite Campus / Canvas / SchooLinks
- Tips for Students and Parents

2028
class of

CONNECT

Let's Win Some NNHS Gear...

- Why would I see my School Counselor?
- What is 1 student support that we offer at NNHS?
- What electronic platforms are used by students/parents at NNHS?
- How would I contact my child's Student Services team?
- How many credits does a student need to graduate from NNHS?

School Counselor's Role

- Counselors support students' academic, social/emotional and college/career needs
- Counselors will see their freshmen during Homeroom periods during first semester to deliver 9th grade curriculum
- Counselors see students individually and/or in small groups as needed
- Counselors will meet all their freshmen during course verification to discuss courses for the upcoming year and to update their 4 year plan
- Students can make appointments with their counselor in Student Services 1



Instructional Support Team

Last Names A-Fak

Dean: Brian Peterson

School Counselors:

Pam Martinez - A-BI

Mary Lazowski - Bm-Cz

Molly Murray - Da-Fak

Psychologist: Lisa Tyler

Social Worker: Jenna Cartwright

Nurse: Jo Volkening

Admin Asst.: Kim Giannone

Last Names Fal-Lez

Dean: Sean Williams

School Counselors:

Molly Murray - Fal-Gif

Katy Miller - Gig-Is

Annie Gomez - It-Lez

Psychologist: Elizabeth Struna

Social Worker: Deepak Santhiraj

Nurse: Jo Volkening

Admin Asst.: Lauren Jamieson

Instructional Support Team

Last Names Lf-Roa

Dean: Jeff Farson

Counselors:

Ross Katsma - Lf-Mop

Jen Witt - Moq-Poe

Angelo Georgacopoulos - Pof-Roa

Psychologist: Michelle Marcowka

Social Worker: Kaitlyn McAdams

Nurse: Pam Seubold

Admin Asst.:

Last Names Rob-Z

Dean: Denise Gomez

Counselors:

Angelo Georgacopoulos - Rob-Sek

Ryan Hall - Sel-Trab

Stacy Anderson - Trac-Z

Psychologist: Kattie Patzelt

Social Worker: Brent Terada

Nurse: Pam Seubold

Admin Asst.: Heather Donnary

Collaboration

■ Student

- ▷ Ready for School, Attentive in Class, Homework Completed,
- ▷ Request assistance/support, Give their Best Effort

■ School

- ▷ Positive Learning Environment, Teach Meaningful Content
- ▷ Provide Academic Assistance

■ Parent/Guardian/Family

- ▷ Monitor Progress, Positive Support, Realize Potential
- ▷ Not Setting Unattainable Goals



Collaboration



<u>Parent Responsibility</u>		<u>Student Responsibility</u>
Relevant Parent Info: Open House, PT Conferences	<u>Being Informed</u>	Relevant Student Info: Homeroom, Canvas/IC, Remind
Questions, Updates	<u>Communication w/ Teachers</u>	Grade Management, Questions, Proactive knowledge of grades/assignments
First, ask your student if they know. Then, ask. Don't know who? Start w/ Teachers!!	<u>Asking Questions</u>	Ask!
Calling attendance line; use attendance app.	<u>Being Absent</u>	Contacting teacher to learn make-up work

Collaboration



<u>Parent Responsibility</u>		<u>Student Responsibility</u>
Games, Concerts, and Parent-Centered Events	<u>Attending School Activities</u>	Homecoming, Dances, and Student–Centered Events
Discuss 4-year plan at home and approve the class selections	<u>Building Schedules</u>	Lead the class selections and research classes
Engage with discipline and support resulting consequences	<u>Accepting Accountability</u>	Recognize behavior and accept/experience consequences
Be proactive, seek help early, inform school if struggles at home	<u>Building Academic, and Emotional Health</u>	Be proactive, seek help early, tell parent and school of struggle

NNHS Graduation Requirements

Graduation Requirements	
English	4.0 credits
Mathematics	3.0 credits
Science	2.0 credits
Social Studies	2.5 credits
* US History	1.0 credits
*Civics	0.5 credit
*Social Studies electives	1.0 credits
Fine Arts	0.5 credit
Career/Technical Education	1.0 credits
Physical Education	3.5 credits
Health	0.5 credit
Consumer Economics	0.5 credit
Electives	3.5 credits
Total	21.0 credits

"Common College" Requirements	
English	4.0 credits
Mathematics	3.0+ credits
Science	3.0+ credits
Social Studies	3.0+ credits
World Language	0.0 - 4.0 credits

* Electives are defined as any course not required for graduation

** 2.0 credits can be transferred in to NNHS ***with prior approval***

Dual Credit Courses

Naperville North offers dual credit courses that students can take to earn college credit:

- *Agriscience*
- *Business*
- *Family & Consumer Science*
- *Mathematics*
- *Technology & Engineering*
- *World & Classical Languages*

2024-2025 Naperville 203 Dual Credit Courses	
Naperville 203 Course	University Partner Course
Agriscience	
Aquaculture and Urban Food Production J170D2	HORT 2300 (Intro to Sustainable Urban Ag) COD 3 credits
Floral & Landscape Design J150D2	HORT 1105 (Floral Design I) COD 3 credits
Plant Science J110D1	HORT 1100 (Introduction to Horticulture) COD 3 credits
Business	
Accounting 1 B240D1 – B240D2	ACCOU 1110 (Accounting Procedures) COD 3 credits
Business INCubatoredu B370D1 – B370D2	BUSIN 1161 (Entrepreneurship) COD 3 credits
Introduction to Business (NNHS only) B100D1, B100D2	BUSIN 1100 (Introduction to Business) COD 3 credits
Blended Intro to Business (NNHS only) B100F1, B100F2	
Marketing B300D1 or B300D2	MARKE 1100 (Consumer Marketing) COD 3 credits
Blended Marketing B300F1	
Computer Programming 2 B460D2	CIS 1400 (Programming Logic and Technique) COD 4 credits
Advertising (Social Media Marketing) B340D2	MARKE 1150 (Social Media Marketing) COD 3 credits
Blended Advertising (Social Media Marketing) B340F2	
Family & Consumer Science	
Fashion Merchandising F100D2	FASHI 1210 (Introduction to the Fashion Industry) COD 3 credits
Health Occupations F700D2	HLTHS 1110 (Biomedical Terminology) COD 3 credits
Introduction to Health Occupations F660D1 or F660D2	HLTHS 1100 (Survey of Health Care Careers) COD 2 credits
Introduction to Teaching 1 F580D1 or F580D2	EDUCA 1100 (Introduction to Education) COD 3 credits
Introduction to Teaching 2 F620D1 or F620D2	EDUCA 1101 (School Procedure) COD 3 credits
Mathematics	
Multivariable Calculus w/Lin Algebra (NNHS Only) M650D1 – M650D2	MATH 253 (Multivariable Calculus) North Central College 4 credits
	MATH 300 (Linear Algebra) North Central College 4 credit
Multivariable Calculus (NCHS Only) M640D1 – M640D2	MATH 241 University of Illinois 4 credits
Differential Equations (NCHS only) M660D1 – M660D2	MATH 2260 Benedictine University 4 credits
Technology & Engineering	
Automotive 1 – Transportation Engineering & Maintenance J700D1 or J700D2	AUTO 1040 (Automotive for Non-Majors) COD 3 credits
Blended PLTW Cybersecurity J490F1-J490F2	CIT 1640 (Network Security Fundamentals) COD 3 credits
	CIT 2640 (Ethical Hacking) COD 3 credits
Drafting Studio 2 J575D1-J575D2	ARCH 1101 (Basic Architectural Drafting) COD 3 credits
(Must have completed Drafting Studio 1 J57011 or J57012)	ARCH 1211 (Basic Computer-Aided Drafting-AutoCAD) COD 3 credits
Electronics 1 J420D1, Blended Electronics 1 J420F1 (sem 1)	ELECT 1100 (Electricity & Electronics Fundamentals) COD 3 credits
Electronics 1 J420D2, Blended Electronics 1 J420F2 (sem 2)	ELECT 1101 (Circuits 1) COD 3 credits
Information Technology Systems 1 J450D1 or J450D2	CIT 1111 (Computer & Hardware Maintenance) COD 3 credits
Information Technology Systems 2 J470D2	CIT 1116 (Network Essentials) COD 3 credits
World & Classical Languages	
German 5 W450D1 – W450D2	GERMA 2251 (Conversation & Composition I) COD 3 credits
	GERMA 2252 (Conversation & Composition II) COD 3 credits
Spanish 5 W850D1-W850D2	SPANI 2251 (Conversation and Composition I) COD 3 credits
Blended Spanish 5 W850F1-W850F2	SPANI 2252 (Conversation & Composition II) COD 3 credits

[See also the Technology Center of DuPage \(TCD\) course offerings](#)

D203 Clusters, Pathways and Pathways w/ Endorsements

CAREER CLUSTER	Agriculture, Food and Natural Resources	Arts & Communication	Finance & Business Services	Health Sciences & Technology	Human and Public Services	Information Technology	Manufacturing, Engineering, Trades
PATHWAYS * Bold indicates pathway with endorsement	Animal Systems Plant Systems	Audio Visual Technology Journalism & Broadcasting Performing Arts Visual Arts	Hospitality & Tourism Entrepreneurship Finance / Accounting Merchandising/Marketing	Health Sciences	Government & Public Administration Human Services Education & Training	Network Systems / Information Support & Services Programming & Software Development	Architecture & Construction Transportation, Distribution & Logistics Science, Technology, Engineering & Mathematics

NNHS: *Bell Schedule*

<u>Monday</u> Regular Schedule	<u>Tuesday</u> Homeroom	<u>Wednesday</u> Late Start	<u>Thursday</u> Homeroom	<u>Friday</u> Regular Schedule
Period 1 (7:45 - 8:35)	Period 1 (7:45 - 8:30)	Period 1 (9:00 - 9:42)	Period 1 (7:45 - 8:30)	Period 1 (7:45 - 8:35)
Period 2 (8:41 - 9:34)	Period 2 (8:35 - 9:20)	Period 2 (9:47 - 10:29)	Period 2 (8:35 - 9:20)	Period 2 (8:41 - 9:34)
	HOMEROOM (9:25 - 10:10)		HOMEROOM (9:25 - 10:10)	
Period 3 (9:40 - 10:30)	Period 3 (10:15 - 11:00)	Period 3 (10:34 - 11:16)	Period 3 (10:15 - 11:00)	Period 3 (9:40 - 10:30)
Period 4 (10:36 - 11:26)	Period 4 (11:05 - 11:50)	Period 4 (11:21 - 12:03)	Period 4 (11:05 - 11:50)	Period 4 (10:36 - 11:26)
Period 5 (11:32 - 12:22)	Period 5 (11:55 - 12:40)	Period 5 (12:08 - 12:49)	Period 5 (11:55 - 12:40)	Period 5 (11:32 - 12:22)
Period 6 (12:28 - 1:18)	Period 6 (12:45 - 1:30)	Period 6 (12:54 - 1:36)	Period 6 (12:45 - 1:30)	Period 6 (12:28 - 1:18)
Period 7 (1:24 - 2:14)	Period 7 (1:35 - 2:20)	Period 7 (1:41 - 2:23)	Period 7 (1:35 - 2:20)	Period 7 (1:24 - 2:14)
Period 8 (2:20 - 3:10)	Period 8 (2:25 - 3:10)	Period 8 (2:28 - 3:10)	Period 8 (2:25 - 3:10)	Period 8 (2:20 - 3:10)

Huskie Homeroom & WIN

Huskie Homeroom/WIN (What I Need)

- Students attend Homeroom on Tuesdays and Thursdays (between 2nd and 3rd period)
- Each grade level has different activities associated with Homeroom
- School counselors visit Homeroom throughout the school year and offer WIN sessions throughout the year.
- WIN (What I Need) Days are intervention days when teachers refer students or student can self select a support to attend: WIN Days are spread throughout the semester.
- Students are expected sign up to meet with a teacher on WIN days



Student Supports



Academic Support

- Peer Tutoring (Rm 256)
 - ▷ All Lunch periods (4,5,6), M-F
 - ▷ Sept-May
- Departmental Support
 - ▷ Check with content area teachers
- Chemistry Help Center
 - ▷ Mondays - 7:15am-7:40am - Room 272
- Spanish Tutoring
 - ▷ Run by Spanish National Honor Society students
 - ▷ Tuesday and Thursday - 7:15-7:40am - Room 177

Social/Emotional Support

- Instructional Support Teams
- Executive Functioning Support
- Huskie Homeroom
- Individual/Group Counseling
- Lunch and Learns

Student Supports

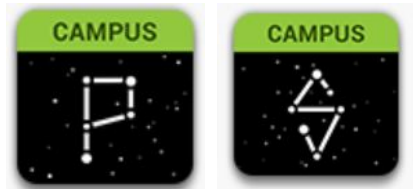
Postsecondary Support

- NNHS PARC (Postsecondary Advising and Resource Center)
 - ▷ Located in the Learning Commons
 - ▷ College & Career Counselor – **Brian La Porte**
 - ▷ College & Career Coordinator – Heidi Roffman
- Individual Planning
- Online Resources
 - ▷ [SchoolLinks](#), [NCompass](#), [NNHS Student Services Website](#), Canvas Course



Digital Platforms at Naperville North

Infinite Campus

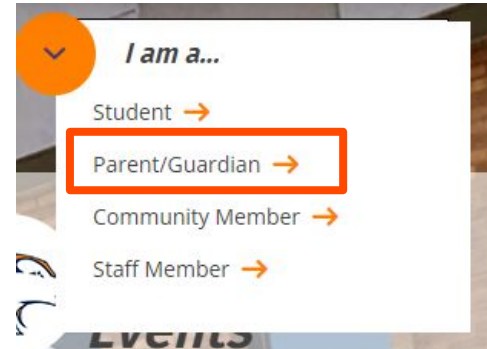


Canvas

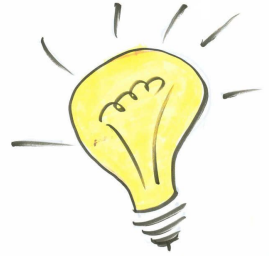


On the NNHS website ...

SchooLinks

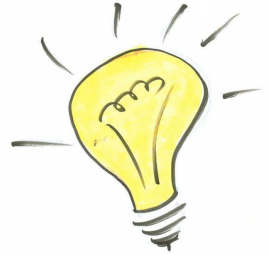


Advice for Students



- Embrace the transition
- Familiarize yourself with staff and resources
- Challenge yourself, but know your limits
- Ask for help
- Use your time wisely
- Get involved
- Talk to your parents
- Have fun and be proud to be a Huskie!

Advice for Parents



- Recognize and support the transition to high school
- Foster independence
- Establish guidelines regarding Chromebooks, phones, grades
- Encourage balance
- Familiarize yourself with school policies
- Be proud of who they are
- Attend events and support the Huskies!

THANK YOU & WELCOME!

