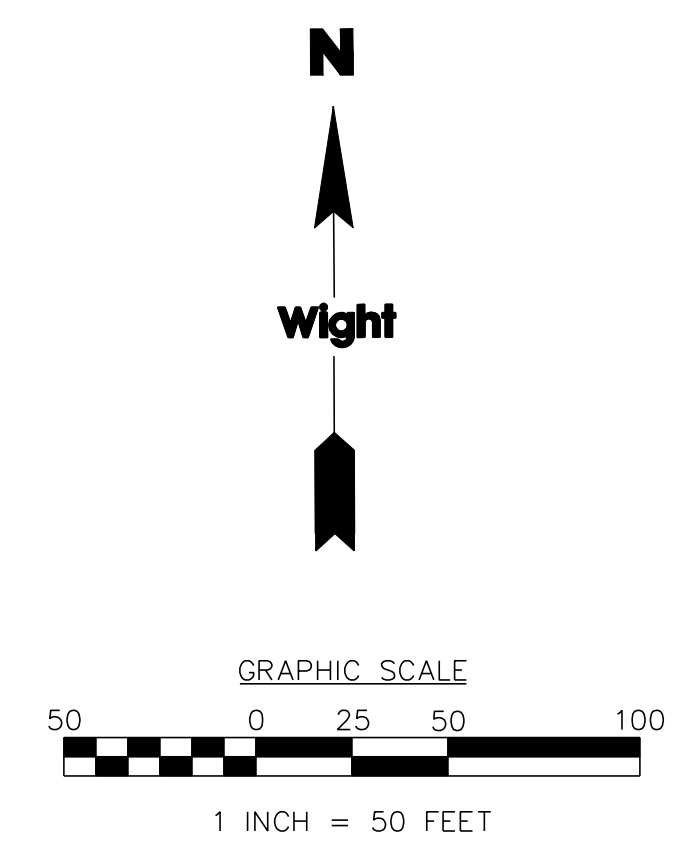
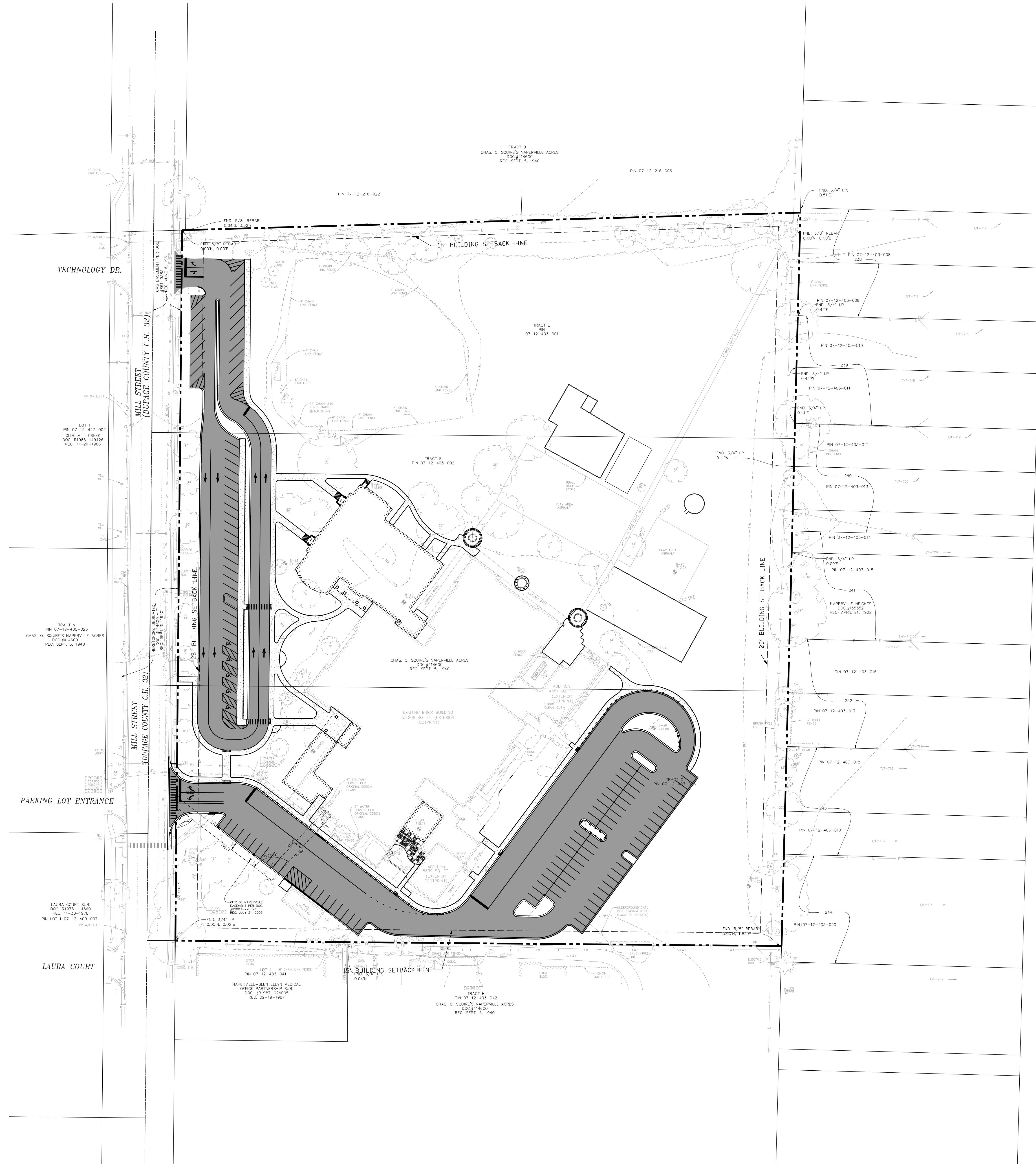


\$(getvar, "dwgprefix")\$(getvar, "logname")\$(getvar, "loginname")\$(etime, 0, MON DD" " YYYY H:MM:SS am/pm)
 Wight, %Copyright% reserved. No part of these documents may be reproduced, stored, or transmitted in any form or by any means, electronic, mechanical, photocopying, recording or otherwise, without the prior written consent of Wight.



SITE DATA TABLE	
PARCEL NUMBER.....	07-12-403-001, 002, 003
CURRENT ZONING.....	R3
PROPOSED ZONING.....	R3
TOTAL SITE AREA.....	13.65 AC (594,651.85 SQ FT)
PROPOSED BUILDING ADDITION.....	0.416 AC (18,137 SQ FT)
PROPOSED PARKING SPACES.....	132 REGULAR STALLS 5 HANDICAPPED STALLS 137 TOTAL STALLS



Wight & Company
 2500 N. Frontage Rd. Darien, IL 60561
 630.969.7000 630.969.7979 fax
 Design Firm Registration 184-000451

REV	DESCRIPTION	DATE
1	75% DESIGN DEVELOPMENT	07/17/08
2	50% DESIGN DEVELOPMENT	06/21/08
3	25% DESIGN DEVELOPMENT	06/13/08

ADDITION & RENOVATIONS TO MILL STREET ELEMENTARY SCHOOL
 1300 N. Mill Street
 Naperville, IL 60563

OVERALL SITE PLAN

Project Number:
 02-5102-08
 Drawn By:
 D.J.K.
 Sheet:

C02.00



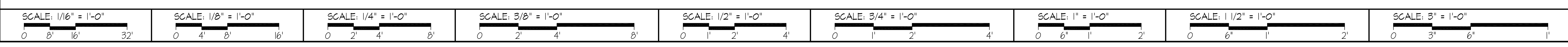
Wight

Wight & Company
2500 N. Frontage Rd. Darien, IL 60561
630.969.7000 630.969.7979 fax
Design Firm Registration 184-000451



- ADDITION
- REMODEL
- EXISTING TO REMAIN

1 FIRST FLOOR PLAN
A20 SCALE: 1/16" = 1'-0"
PLAN NORTH



NOT FOR CONSTRUCTION

15% DESIGN DEVELOPMENT	01/11/08	
50% DESIGN DEVELOPMENT	06/21/08	
25% DESIGN DEVELOPMENT	06/13/08	
REV	DESCRIPTION	DATE

ADDITION & RENOVATIONS TO MILL STREET ELEMENTARY SCHOOL
1300 N. Mill Street
Naperville, IL 60563

OVERALL FIRST FLOOR PLAN

Project Number:
02-5102-08
Drawn By:

Sheet:

A2.0

R:\DRAWINGS\Naperville D203_02-5102\02-5102-08_Mill Street ES\2-DD\in progress\08-0716 MED_UPDATE\A0200_5102-08.dwg poquino Jul 16, 2008 1:07:39 pm
Wight & Copyright 2008 All rights reserved. No part of these documents may be reproduced, stored, or transmitted in any form or by any means, electronic, mechanical, photocopying, recording or otherwise, without the prior written consent of Wight.

VIEW OF MAIN ENTRANCE



MILL STREET ELEMENTARY SCHOOL

DESIGN DEVELOPMENT

July 16, 2008

02-5102-08



VIEW OF GYMNASIUM EVENTS ENTRANCE



MILL STREET ELEMENTARY SCHOOL
DESIGN DEVELOPMENT

July 16, 2008

02-5102-08



VIEW OF GYMNASIUM ADDITION



MILL STREET ELEMENTARY SCHOOL
DESIGN DEVELOPMENT

July 16, 2008

02-5102-08



VIEW OF GYMNASIUM ADDITION



MILL STREET ELEMENTARY SCHOOL
DESIGN DEVELOPMENT

July 16, 2008

02-5102-08



OVERALL VIEW



MILL STREET ELEMENTARY SCHOOL DESIGN DEVELOPMENT

July 16, 2008

02-5102-08

